



Jefferson County
Office of Emergency Management



EMERGENCY PREPAREDNESS GUIDE



LOCAL RISK ASSESSMENT

Page 2

PLANNING AHEAD

Pages 3-5

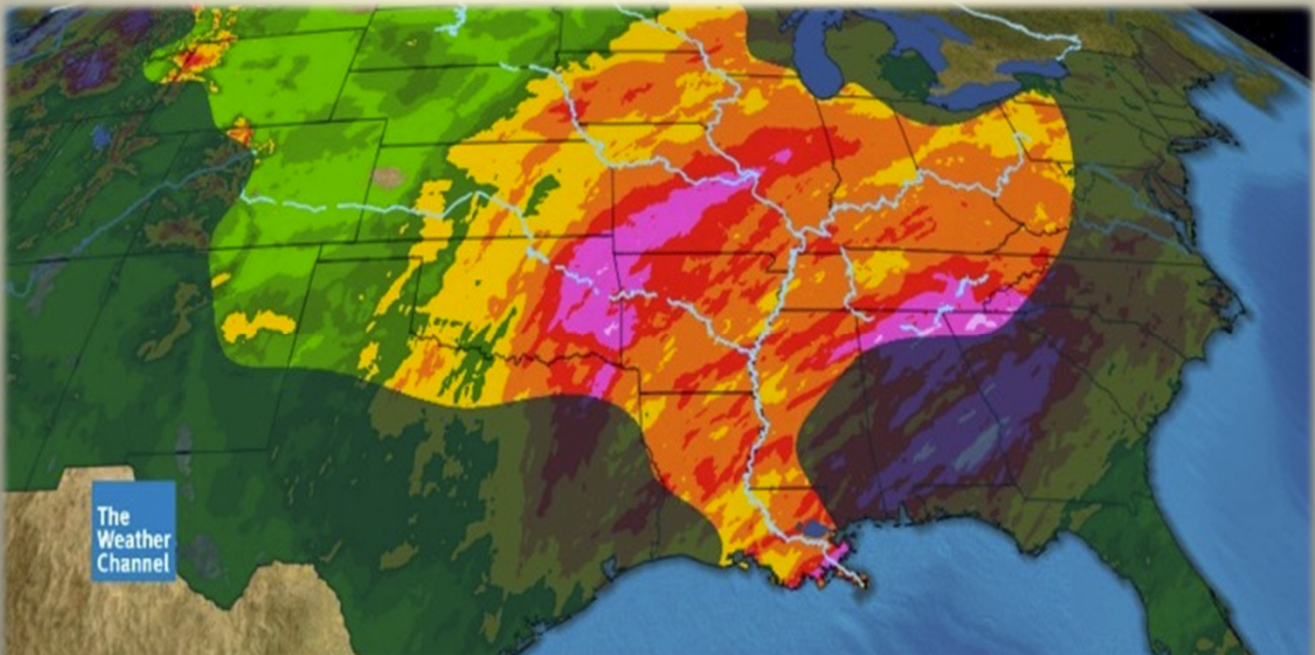
GETTING INVOLVED

Page 6

RESOURCE LINKS

Pages 7

PLAN – PREPARE - RECOVER



The National Weather Service just issued a Tornado Watch...

Storms have been in the forecast for days and now they're on the way. What steps could you take to ensure you're prepared for whatever may come?

1. Identifying a safe place to seek refuge from the storms in your home or office.
2. Keeping flash lights, water and snacks in your identified refuge area.
3. Keeping a radio, tuned to local media, in your refuge area so you can track the storms.

How can I prepare...
for this?



If we only knew the likelihood that a disaster would occur. If we only knew what kind of disaster it might be and how long it could last, we could more easily prepare for it.

We Do Know!

Thanks to our Risk Assessment. So, what are the most likely kinds of disasters that could occur in our area?

Thunderstorms	Tornadoes
Utility Failures	Winter Storms
Extreme Heat	Flooding

Although there are other incidents that could occur, these are the most likely to occur based on historic data. That makes preparing for these situations a great place to start!

There are many things you can do to become more prepared, but the basic process can be summed up in three simple steps:

- 1) Have a Plan
- 2) Keep a Disaster Supply Cache
- 3) Stay Informed

Disaster Preparedness will be different for each household depending upon your family needs. Start with the basics and adapt the framework to suit your family.

MAKE A PLAN

THE BASICS



Though disasters take many forms, the impact they have on the community and individuals are largely the same. Don't focus on the disaster, focus on the impacts and how you can prepare for those. For example, do you have...

- ***A severe weather refuge?***
Find a safe place below ground level or in an interior room where you can ride out the storm.
- ***A home evacuation plan?***
How will you get out if the door is jammed; if the stairwell is on fire and you are on the second floor?
- ***A family reunification point?***
Pick multiple locations, one near and one far. A single nearby location (like the mailbox) may work for most situations, but what if staying in the neighborhood isn't safe?
- ***Updated disaster supply caches?***
Because spoiled food isn't that tasty.
- ***Contact information for community resources?***
Knowing who can help doesn't mean much if you can't get in touch with them!

Disaster Preparedness will be different for each household depending upon your family needs. Start with the basics and adapt the framework to suit your family.

DEVELOP A DISASTER SUPPLY CACHE

THE BASICS

Try to keep enough supplies in your cache to support you & your family for at least three days. Important items include..

- **Food**
- **Water**
- **Flashlight (with extra batteries)**
- **Hand-crank radio**
- **First-aid supplies**
- **Personal Sanitation Items (i.e. toilet paper)**
- **Small amount of cash (credit cards don't work when the power is out!)**



YOUR FAMILY MAY REQUIRE SPECIFIC ITEMS THAT MAY NOT BE READILY AVAILABLE DURING DISASTERS! CUSTOMIZE YOUR CACHE!



STAY INFORMED

Information is crucial during a disaster. Understand your community's alert systems and local media; know how you'll keep abreast of disaster information before, during and after the incident!

All-Hazards Weather Radios

If equipped with SAME capability, these can be programmed to provide automatic alerts about potentially hazardous situations impacting Jefferson County

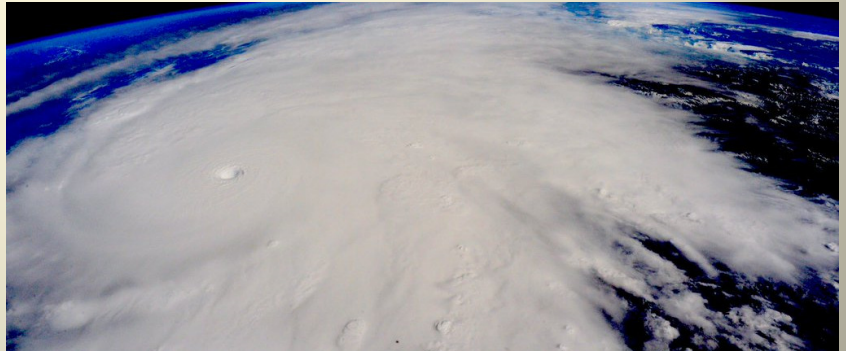
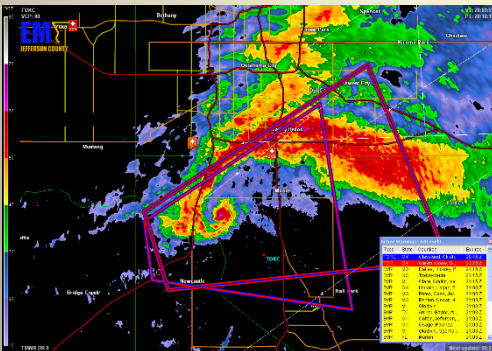
Jefferson County SAME Code: 029099

Reverse 911

Jefferson County utilizes a system called CodeRED to inform its citizens of potentially hazardous situations. It is free to county residents and can be signed up for through Jefferson County 911 Dispatch online or via their non-emergency telephone line.

636-797-9797
www.jeffco911.org

TIP: KEEP A BATTERY-POWERED RADIO HANDY SO YOU CAN STAY INFORMED EVEN WHEN THE POWER IS OUT!



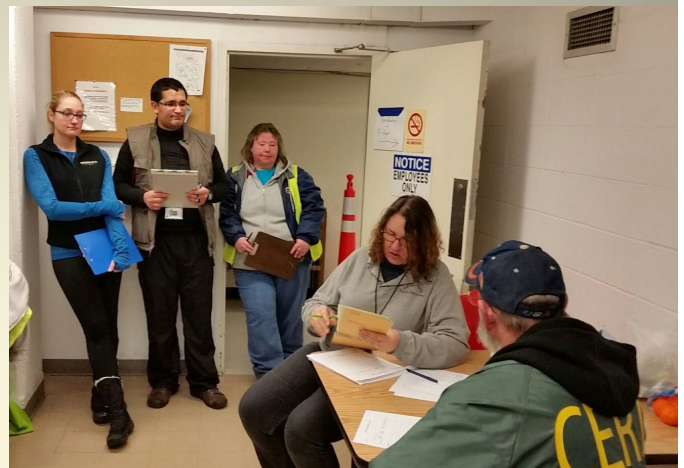
GET INVOLVED

You don't have to be a first responder to help others during a disaster.



The Community Emergency Response Team (CERT) program is a disaster preparedness and response course offered free of charge to Jefferson County residents through selected fire districts. CERT provides instruction on numerous topics including disaster preparedness, first aid and small fire suppression.

Interested CERT members can even be called upon by emergency response agencies to provide supplemental assistance during disasters.



CERT volunteers gather at the Emergency Operations Center to receive assignments during response to December 2015 Flooding



JEFFERSON COUNTY COMMUNITY ORGANIZATIONS ACTIVE IN DISASTER

Jefferson County's Community Organizations Active in Disaster (COAD) is a group of businesses, churches and community action groups that come together following a disaster to assist in the community recovery process. It works to identify and share resources in the community so that they can help those impacted by disaster get back on their feet.

Contact the Jefferson County OEM for more information or connect with the COAD online at www.facebook.com/jeffcocoad.

JEFFERSON COUNTY, MISSOURI

WOULD YOU LIKE TO KNOW MORE?

The information provided to this point has been very basic. If you're ready to dig in, here are some great resources you can utilize free of charge.

STEP #1 – MAKE A PLAN :

READY IN THREE: CREATE A PLAN

[HTTP://HEALTH.MO.GOV/EMERGENCIES/READYIN3/PLAN.PHP](http://health.mo.gov/emergencies/readyin3/plan.php)

AMERICAN RED CROSS: MAKE A DISASTER PREPAREDNESS PLAN

[HTTP://WWW.REDCROSS.ORG/PREPARE/LOCATION/HOME-FAMILY/PLAN](http://www.redcross.org/prepare/location/home-family/plan)

CENTER FOR DISEASE CONTROL: EMERGENCY PREPAREDNESS & RESPONSE

[HTTP://EMERGENCY.CDC.GOV/PREPAREDNESS/PLAN/](http://emergency.cdc.gov/preparedness/plan/)



STEP #2 – MAKE A KIT

READY.GOV: BUILD A KIT

[HTTPS://WWW.READY.GOV/BUILD-A-KIT](https://www.ready.gov/build-a-kit)

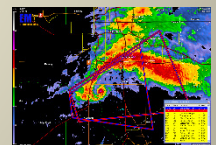
STEP #3 – STAY INFORMED

NATIONAL WEATHER SERVICE: MISSOURI SAME CODES

[HTTP://WWW.NWS.NOAA.GOV/NWR/COVERAGE/CCOV.PHP?STATE=MO](http://www.nws.noaa.gov/nwr/coverage/ccov.php?state=mo)

JEFFERSON COUNTY 911 DISPATCH

[HTTP://WWW.JEFFCO911.ORG/](http://www.jeffco911.org/)



JEFFERSON COUNTY OEM WEBSITE: [BIT.LY/JCMOOEM](http://bit.ly/jcmooem)

FACEBOOK: [WWW.FACEBOOK.COM/JEFFCOOEM](http://www.facebook.com/jeffcooem)

TWITTER: [WWW.TWITTER.COM/JEFFCOOEM](http://www.twitter.com/jeffcooem)

OFFICE PHONE: 636-797-5381

OFFICE FAX: 636-797-2231